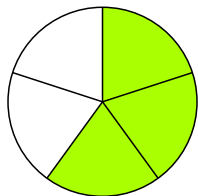


Bruchrechnen mit Knospen und Blüten

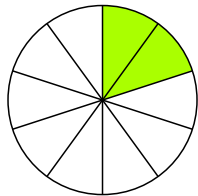
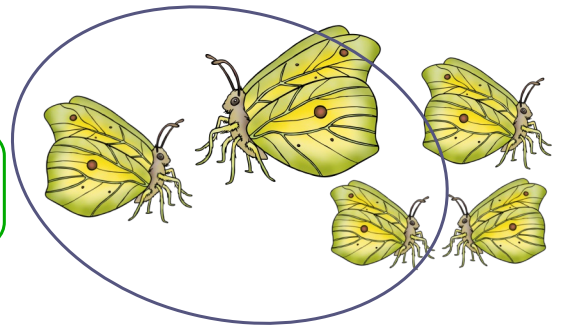
Kreise die Menge ein, die du bekommst und schreibe den Anteil auf.

Du bekommst:

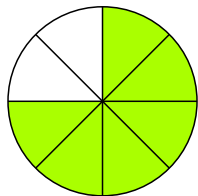
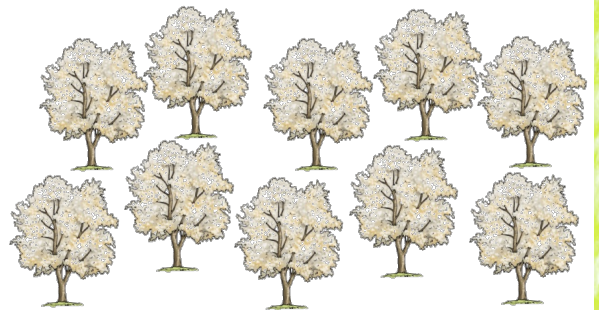


3 von 5
Schmetterlingen:

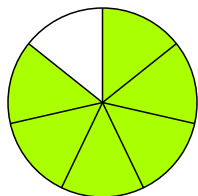
$\frac{3}{5}$



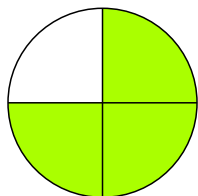
2 von 10
Kirschbäumen:



6 von 8
Ostereiern:



6 von 7
Schwalben:



3 von 4
Narzissen:

