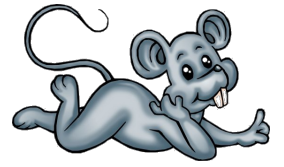
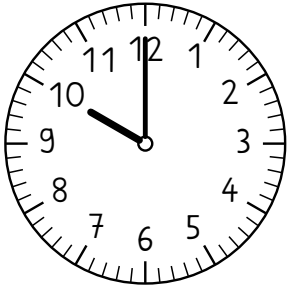


Volle und halbe Stunden

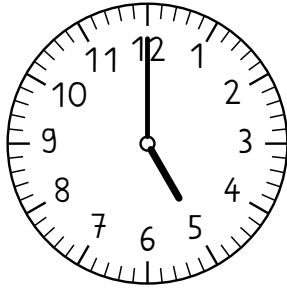


1 Volle Stunden - zwei Uhrzeiten



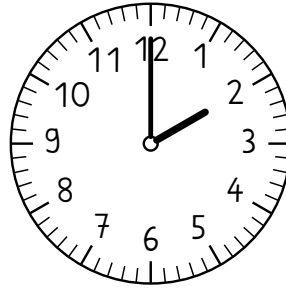
_____ Uhr

_____ Uhr



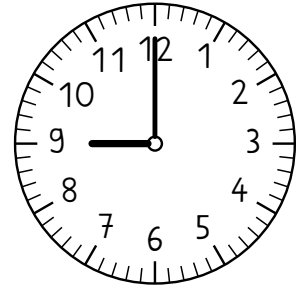
_____ Uhr

_____ Uhr



_____ Uhr

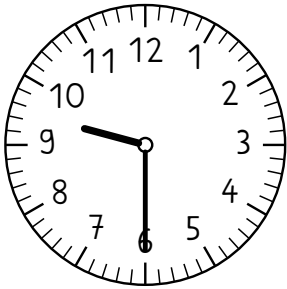
_____ Uhr



_____ Uhr

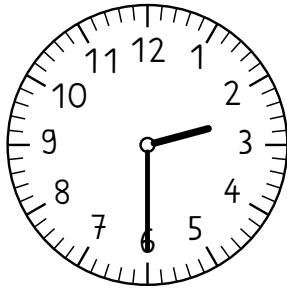
_____ Uhr

2 Halbe Stunden - zwei Uhrzeiten



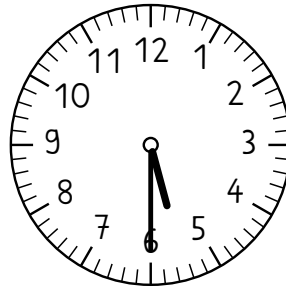
_____ Uhr

_____ Uhr



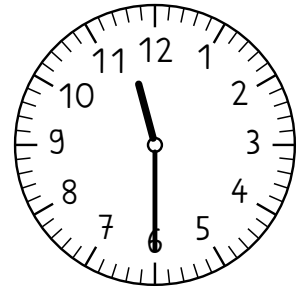
_____ Uhr

_____ Uhr



_____ Uhr

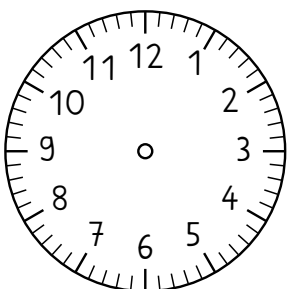
_____ Uhr



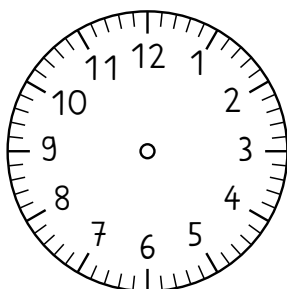
_____ Uhr

_____ Uhr

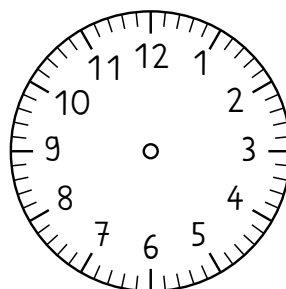
3 Volle und halbe Stunden - Zeichne die Zeiger ein.



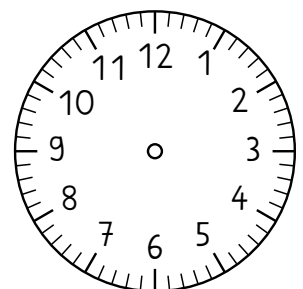
11:00 Uhr



14:30 Uhr



13:00 Uhr



11:30 Uhr